

Joseph Marie Clément  
Ferdinand Dall'Abaco

(1710-1805)

*11 Caprices for solo cello*

Edited by Erik Hamrefors

Non-commercial copying welcome

Capriccio no. 1  
in C minor

Joseph dall'Abaco (1710-1805)

Solo cello

3

6

9

12

16

19

22

25

Capriccio no. 2  
in G minor

Joseph dall'Abaco (1710-1805)

Solo cello

3

5

7

9

11

13

15

17

19

21

23

25

27

29

31

33

1. *tr*

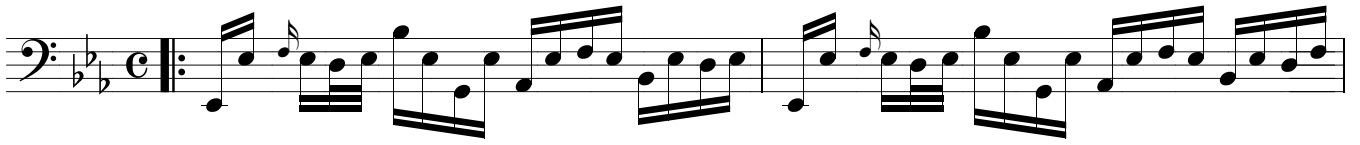
2. *tr*

\* This sudden 6/4 bar, as written in the manuscript, is most likely comprised of two incomplete 4/4 bars.

Capriccio no. 3  
in E-flat Major


Joseph dall'Abaco (1710-1805)

Solo cello



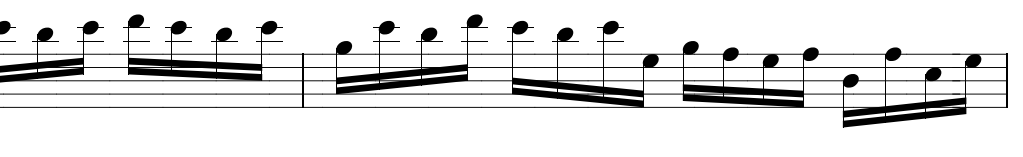
The first staff of music is in bass clef, E-flat major, and common time. It begins with a double bar line and repeat sign. The melody consists of eighth and sixteenth notes, with some beamed sixteenth notes.

3




The second staff starts at measure 3. It features a trill (tr) over a note in the second measure. The notation continues with eighth and sixteenth notes.

5



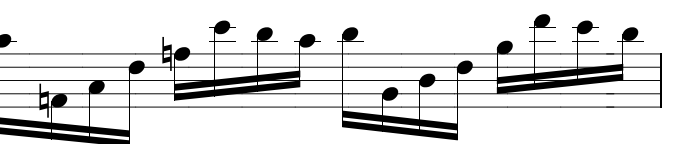
The third staff starts at measure 5. It contains a series of beamed sixteenth notes, creating a rapid ascending and descending scale-like pattern.

7



The fourth staff starts at measure 7. It continues the beamed sixteenth note pattern, with a trill (tr) appearing in the final measure.

10



The fifth staff starts at measure 10. The beamed sixteenth note pattern continues, with some notes marked with natural signs.

12



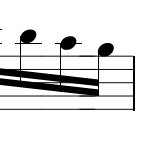
The sixth staff starts at measure 12. The beamed sixteenth note pattern continues, with some notes marked with natural signs.

14

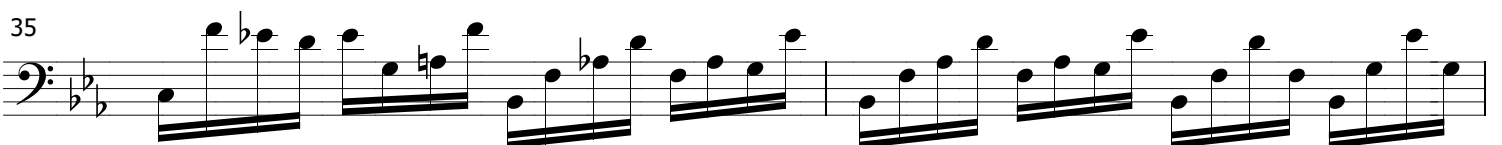
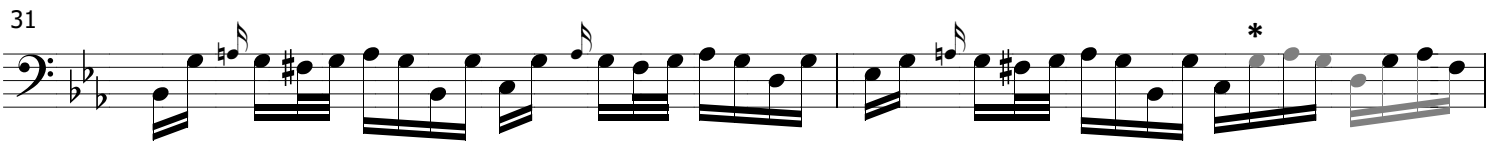
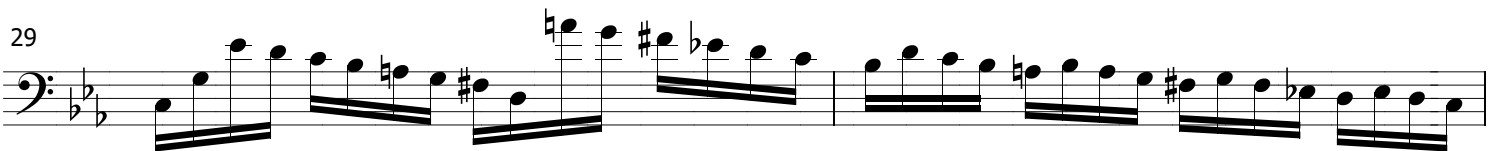
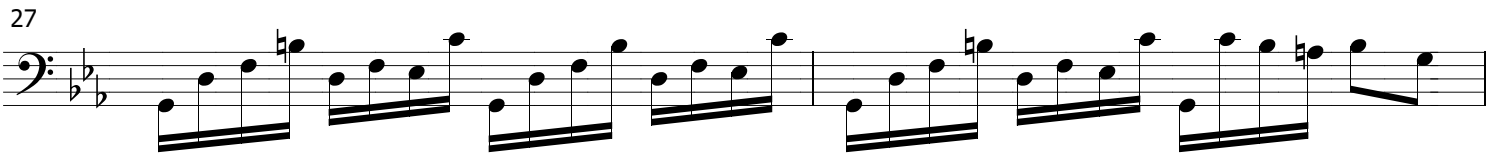
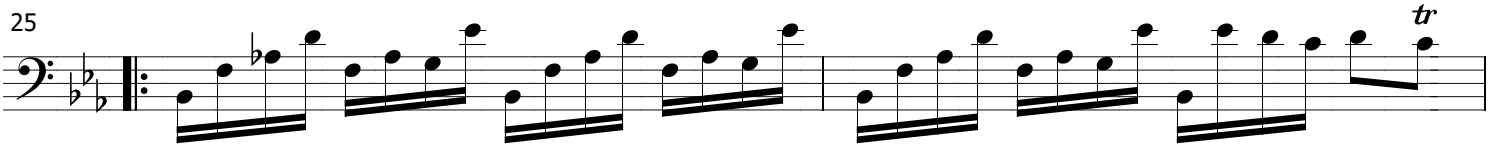


The seventh staff starts at measure 14. The beamed sixteenth note pattern continues, with some notes marked with natural signs.

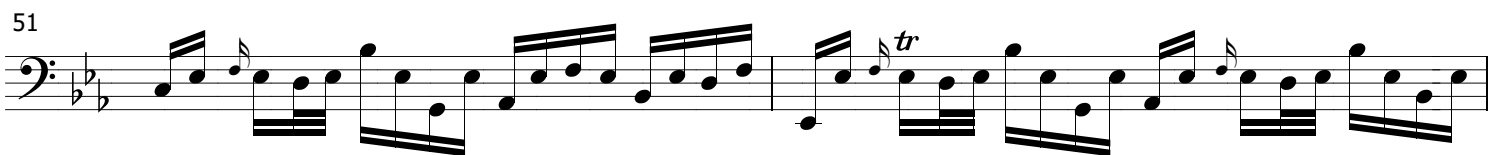
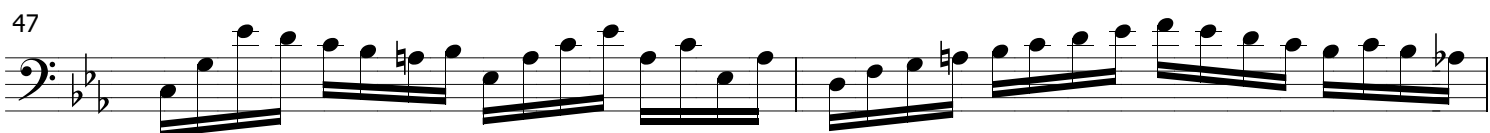
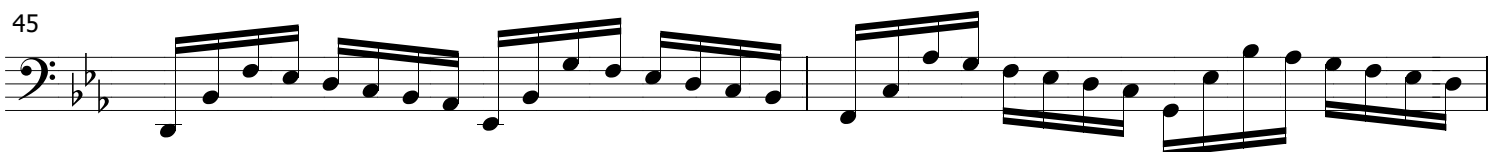
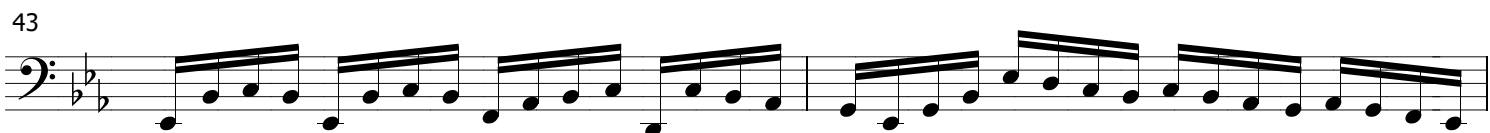
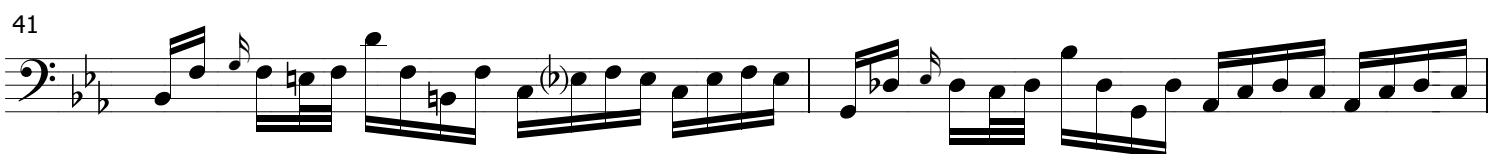
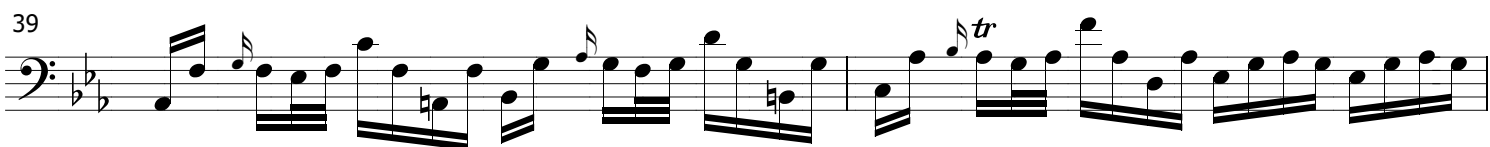
16



The eighth staff starts at measure 16. It features a trill (tr) over a note in the second measure. The notation continues with eighth and sixteenth notes.



\* Suggestion for missing beat in manuscript





Capriccio no. 4  
in D minor

Joseph dall'Abaco (1710-1805)

Solo cello

7

13

19

25

32

38

45

52

59

Capriccio no. 5  
in B-flat Major

Joseph dall'Abaco (1710-1805)

Solo cello

1

6

6

12

12

18

18

24

24

30

30

37

37

44

44

50

*Fine*

Capriccio no. 6  
in E minor

Joseph dall'Abaco (1710-1805)

Solo cello

5

10

15

20

25

30

35

40

45

Capriccio no. 7  
in B-flat Major

Joseph dall'Abaco (1710-1805)

Solo cello

3

5

7

9

11

13

15

\* Suggestion for missing note in the manuscript

17

19

21

23

25

27

29

31

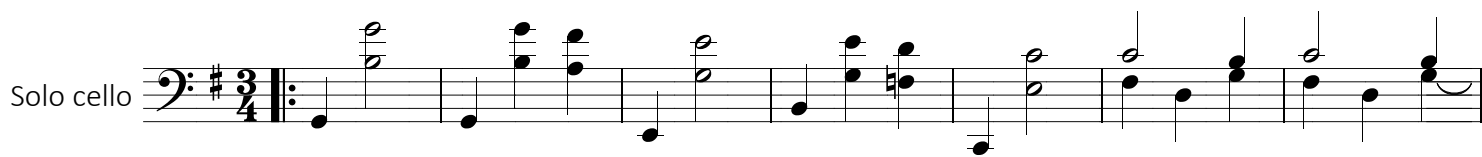
33

\* Suggestion for missing note in the manuscript

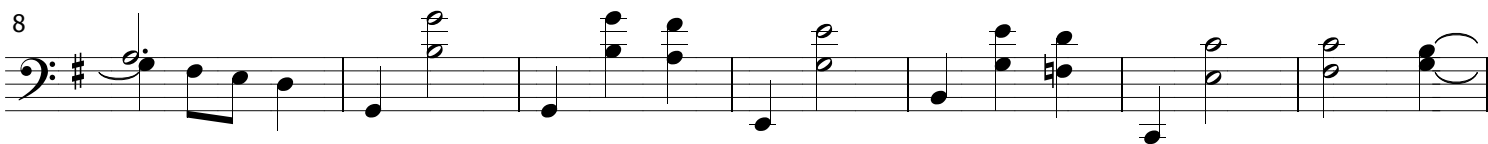
Capriccio no. 8  
in G major/minor

Joseph dall'Abaco (1710-1805)

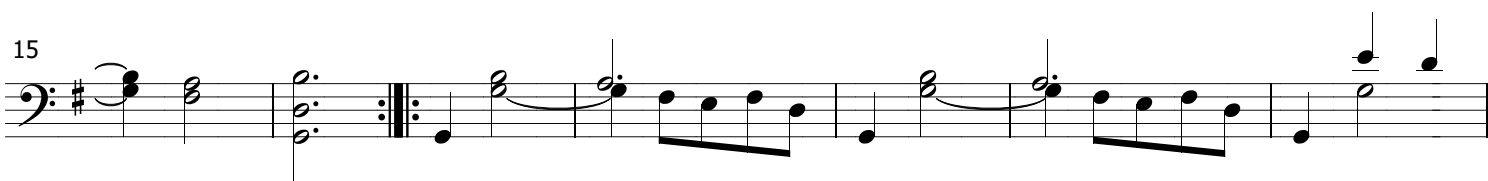
Solo cello



8



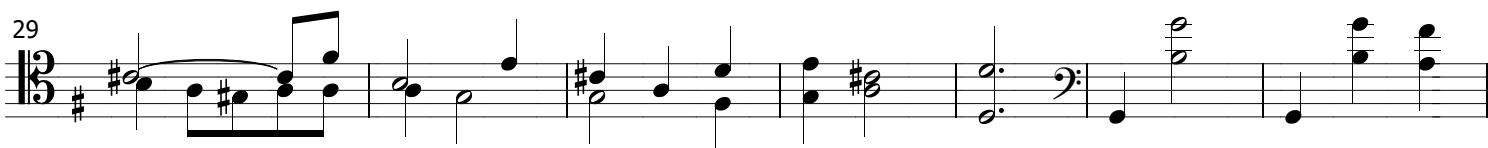
15



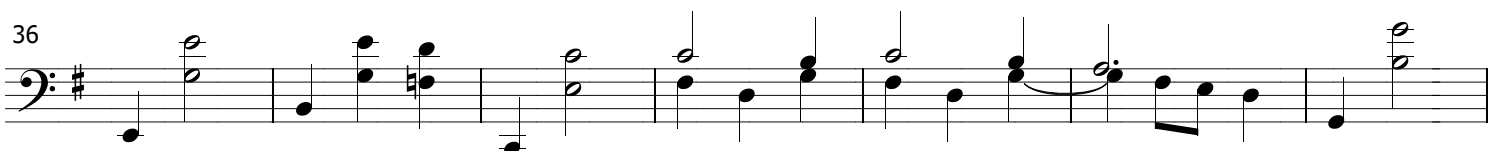
22



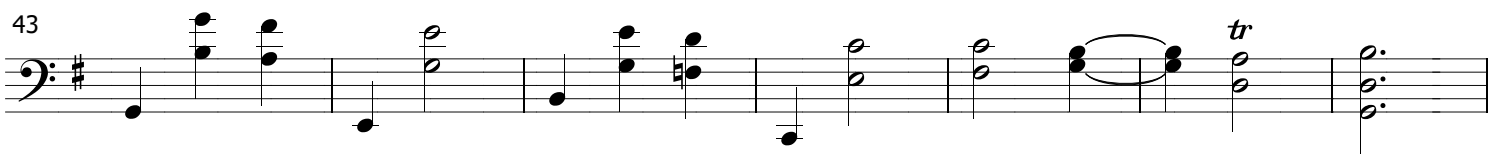
29



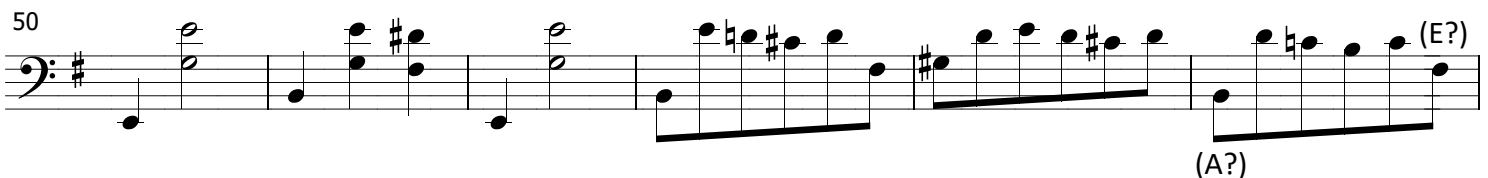
36



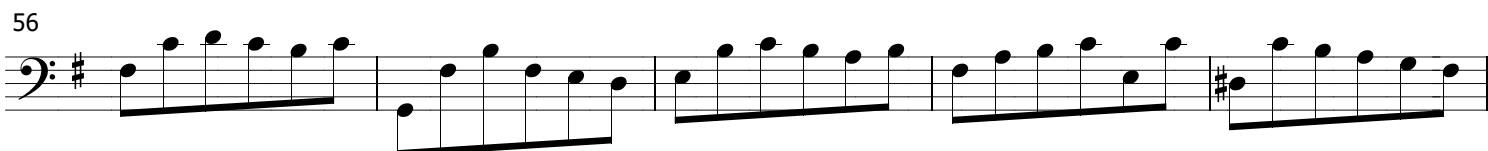
43



50



56



61



\*The manuscript does not contain this tenor clef, but due to the second lower note in bar 24 being marked with a #-sign, the manuscript displaying a new bass clef in bar 35, and the musical language of the following passage in thumb position, this editor assumes that a tenor clef was intended here, valid until bar 34, where the primary motif returns.

65

72

78

85 *Minore*

92

99

105

110

116 *tr* *Maggiore*

123

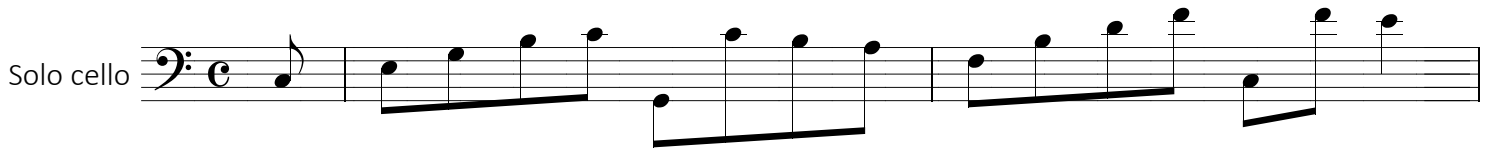
130 *tr*

\* Suggestion for missing note in the manuscript

Capriccio no. 9  
in C major

Joseph dall'Abaco (1710-1805)

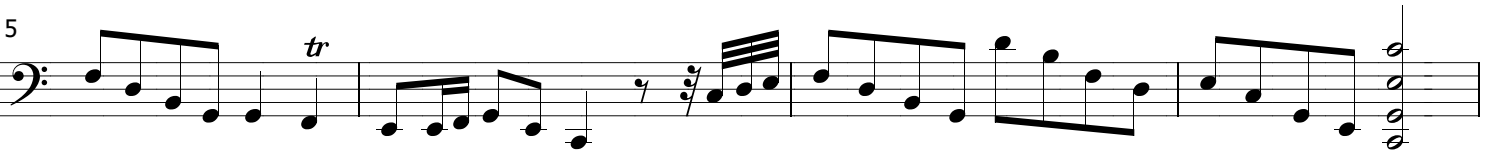
Solo cello



3



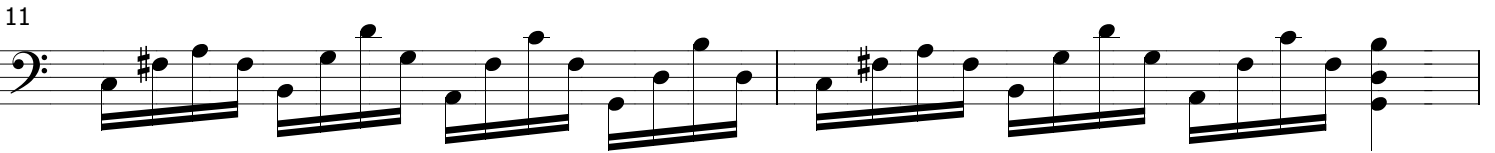
5



9



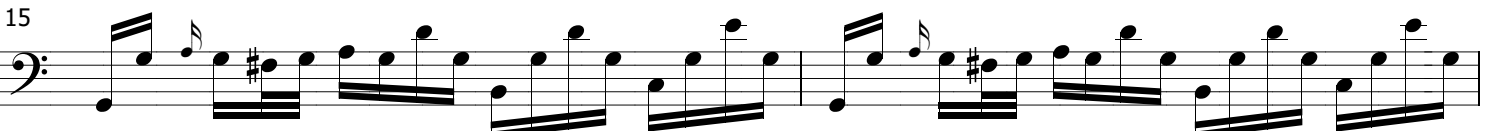
11



13



15



17

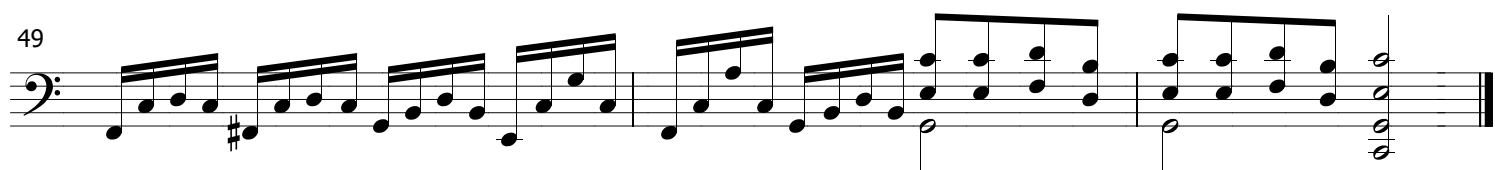
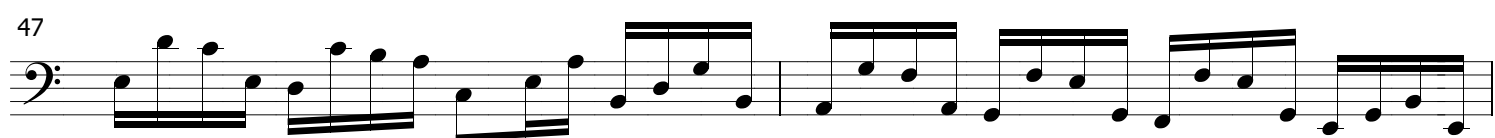
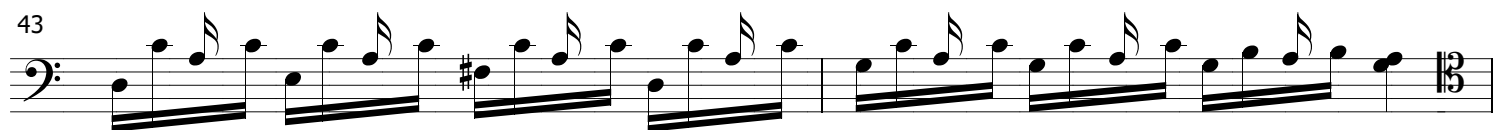


19





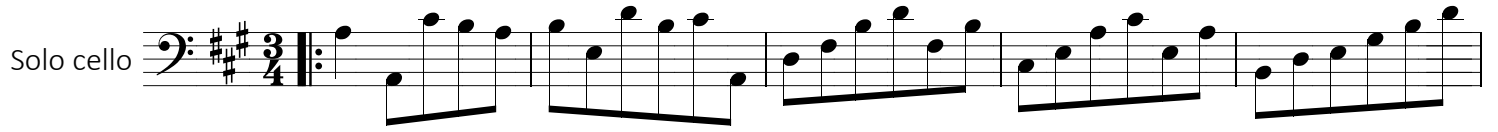




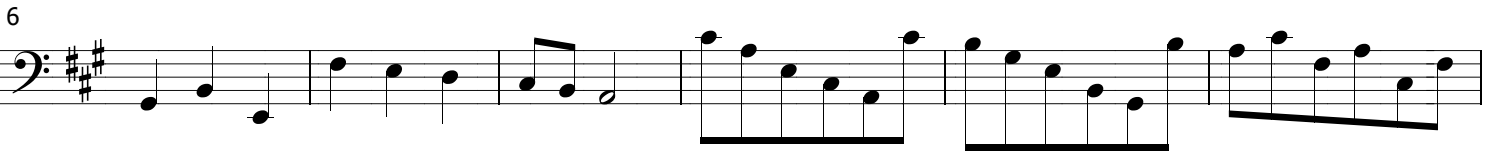
Capriccio no. 10  
in A major

Joseph dall'Abaco (1710-1805)

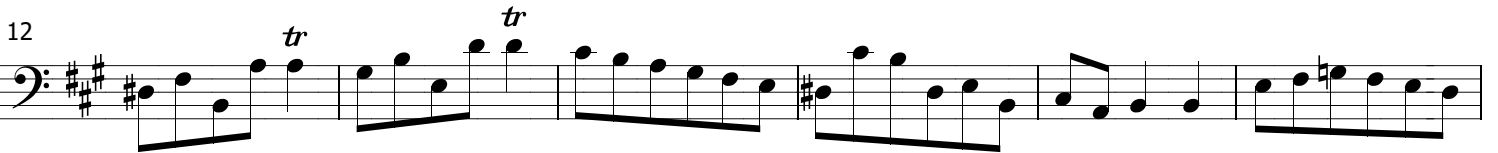
Solo cello



6



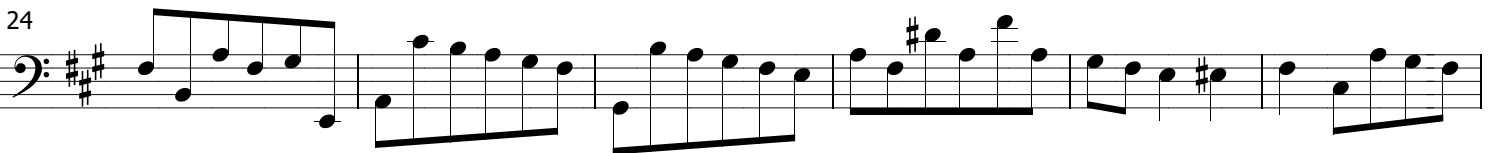
12



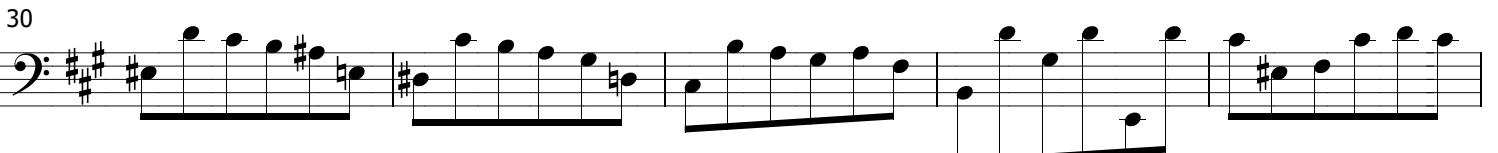
18



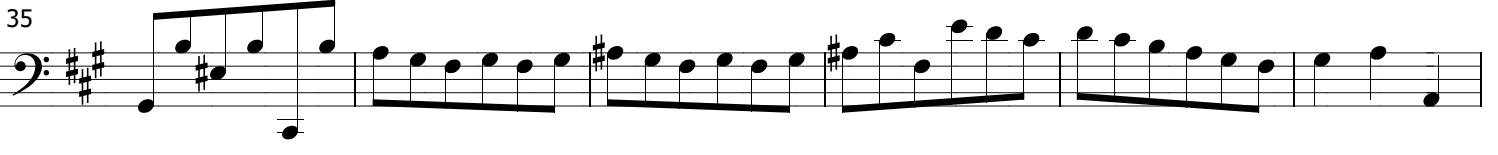
24



30



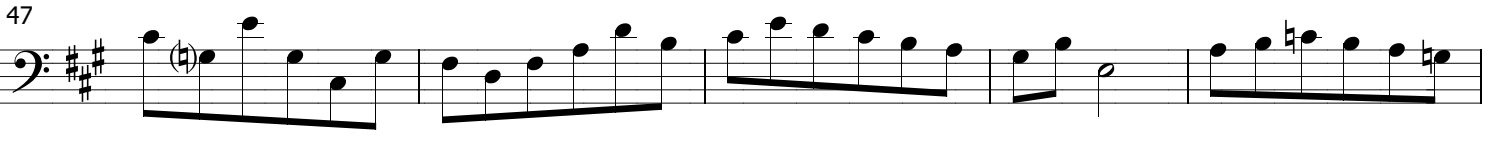
35



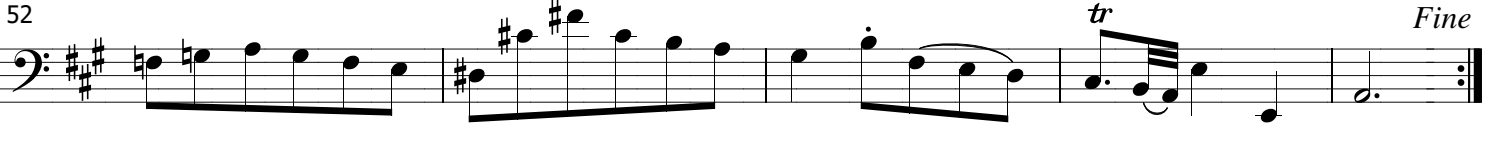
41 (E?)



47



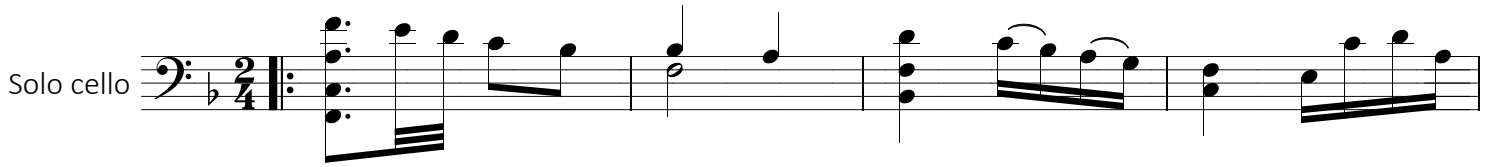
52



Capriccio no. 11  
in F major

Joseph dall'Abaco (1710-1805)

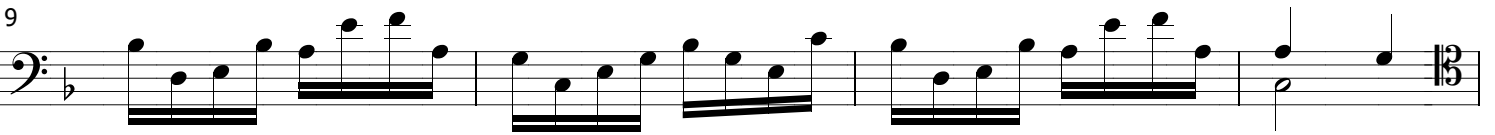
Solo cello



5



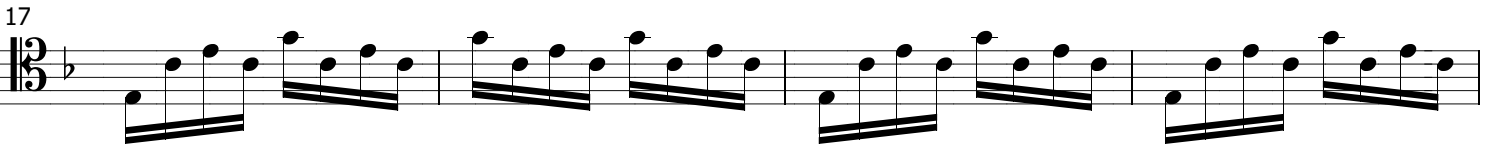
9



13 *Presto*



17



21

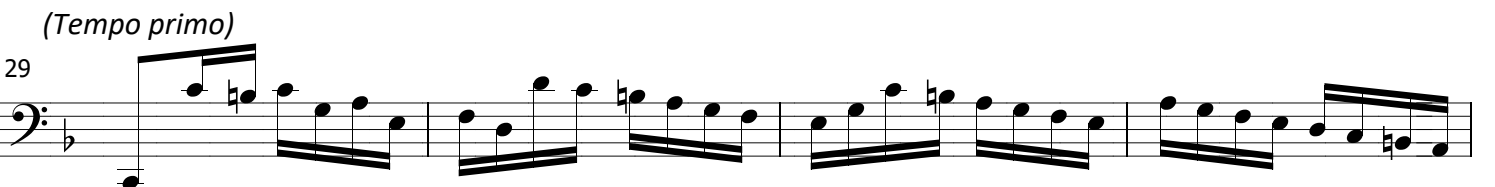


25



(Tempo primo)

29

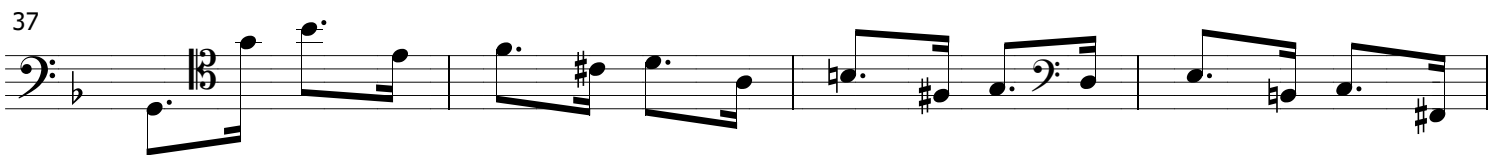


33



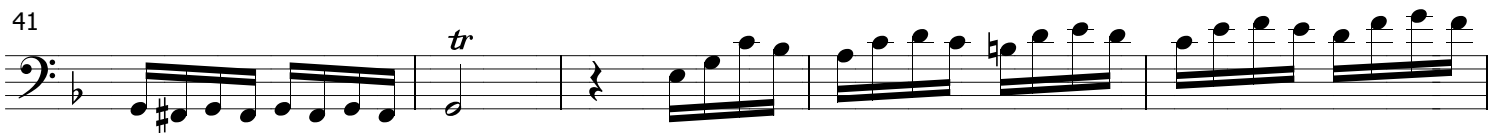
(F?)

37



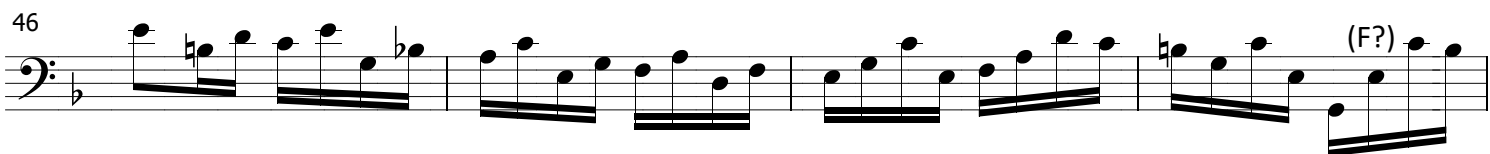
41

*tr*



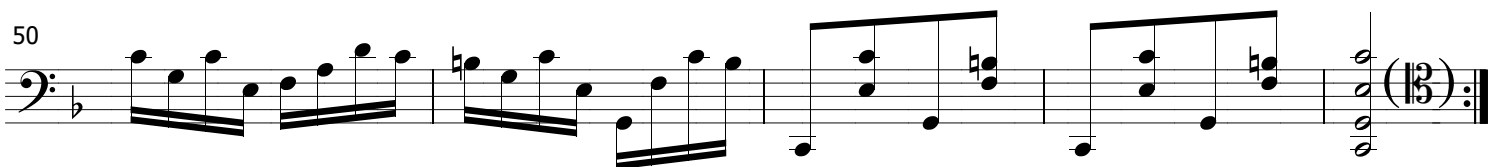
46

(F?)



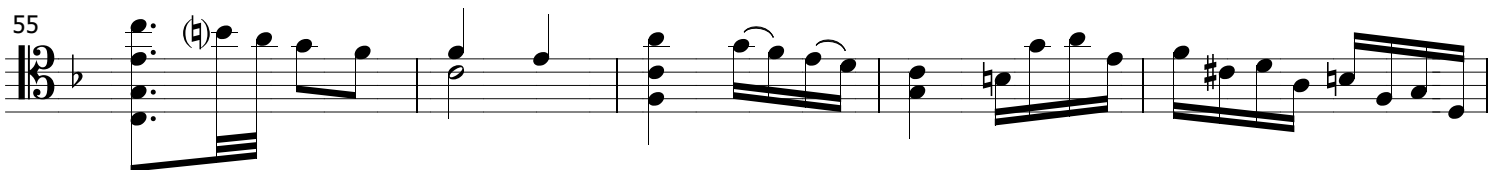
50

(13)



55

(4)




60

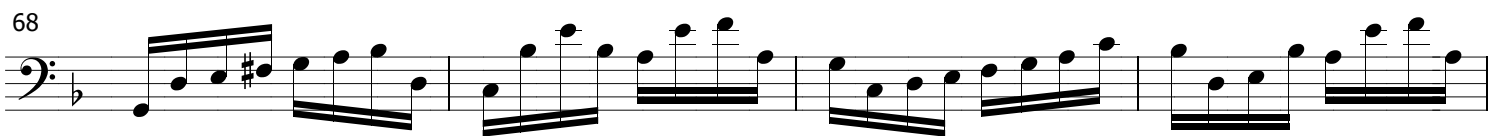
(4)



64



68



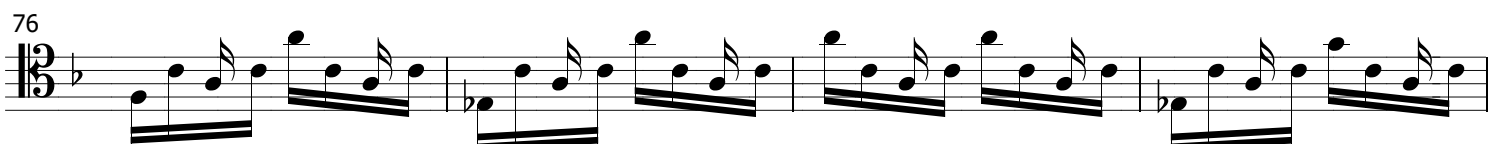
72

*Presto*

0



76



80

84

88

92

96

100

105

110

115

119

(End of manuscript)

*tr*

\* Suggested completion of the piece. Feel free to use your own imagination!